

HYVA TIPPING VALVE



PROPORTIONAL TIPPING VALVE SIDE PORTS - PNEUMATIC

Hyva

tipping valve type:

PNEUMATIC

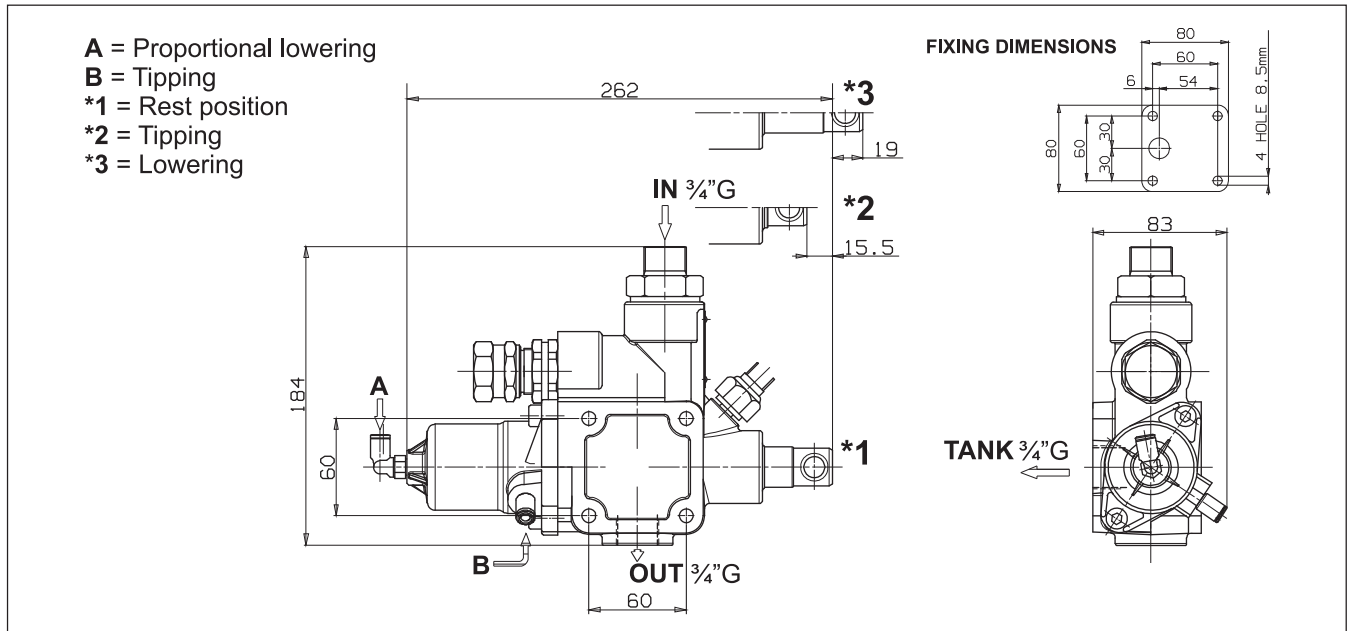
working pressure:

170 BAR

page # 1 / 1

part number valve:

147 67 630



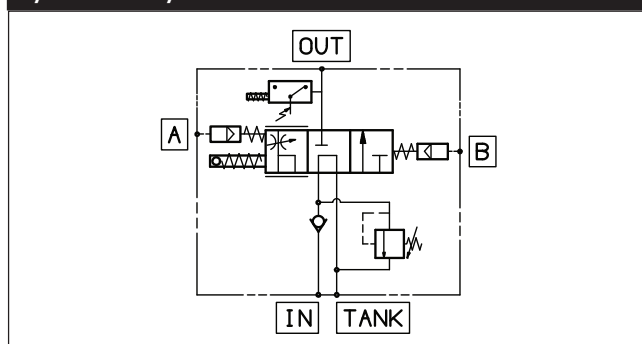
specifications

type	: Pneumatic operated
hydraulic connections	: see drawing
max. working pressure	: 280 bar
max. peak pressure	: 400 bar
relief valve setting	: 170 bar
max. advised flow	: 150 L/min. (see Δp -Q characteristic)
filtration	: $\leq 25 \mu m$
oil types	: mineral oil (DIN 51524 / 51525)
viscosity range	: 12 / 100 mm ² /s
temperature range	: -25 / + 80 °C
mass	: 5.8 kg

general information

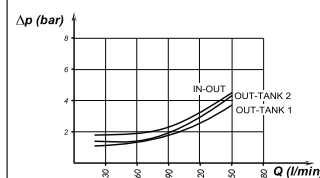
- Mount the valve according to the Hyva mounting instructions.
- Use the correct washers and adapters in the ports to prevent housing deformation.
- Do not use adapters with tapered threads.
- To further prevent deformation of the valve housing, the mounting plate surface or block must be completely flat and plane.
- Do not weld to the valve.
- Max. torque for bolts to mount the valve is 25 Nm.

hydraulic symbol



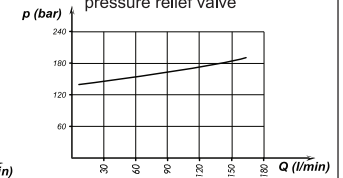
Δp - Q characteristic

Tipping valve pressure drops



The graph refers to oil type ISO VG 46 at 50°

p-Q operating curve for pressure relief valve



mounting and notes

Pneumatic proportional tipping valve to suit medium-heavy duty tipper trucks. Operated by proportional cab control.

- Built-in check and adjustable safety valves (direct type).
- Nodular cast-iron body for pressure up to 400 bar.
- Either Chassis or tank (DSP kit) mounting options.
- Mechanical Direct End-of-stroke with anti-shock spring.
- Ready for pressure signal switch mounting.
- Cataphoresis coated body and nickel spool.
- Compact size.
- Guaranteed for oil temperature range -25+80 °C, viscosity range 12+100 cSt and oil filtering 25 μm .