

HYVA CYLINDER

714 18 351



type: **ULB 110-4-1225-K177-40-1/2"-HC**
 tipping weight: **7-12 ton**
 page # 1 / 2

Stage diameters 110 93 77 61	front view cylinder		A 150 ØC 130 G ¹ 513 I 336 K ¹ 177 M ¹ 87 ØP 88 ØQ 53 S 342 ØW 40 X 40
--	---------------------	--	---

¹including 20 mm pull-out [tol. -5; +30 mm]

²cylinder is delivered including oil inlet swivel adapter and cup

specifications

total stroke ¹	1225 mm
dry weight cylinder only	33 kg
total volume	8.2 L
working volume	7.3 L
maximum pressure	190 bar
maximum pump flow	44 l/min
maximum allowable thrust first stage ³	11.0 ton
oil inlet	1/2" BSP

technical notes

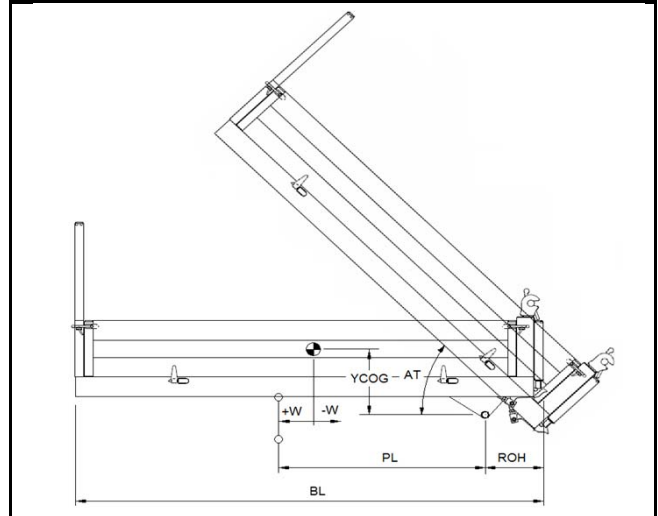
This cylinder is a lifting device only and may not be used as a structural member or be subjected to side load. Side load and/or poor alignment might result in cylinder leakage. Hyva therefore strongly recommends the use of a cradle, even in instances where the cylinder only tips to the rear or to the side.

The cylinder is painted black RAL9005. For suitable hydraulic oils, please refer to data sheet OIL-0011. For details of available brackets and cradles, please refer to data sheet 015BRA07.

Detailed calculations can be made using the HYVA Tipper Program, freely available from tipper.hyva.com.

³The cylinder thrust on the first stage (from the HYVA Tipper Program) must not exceed the maximum allowable (see specifications above).

tipping view



tipping weight				tipping weight			
AT	46			deg	52		
PL	1600			mm	1410		
YCOG	450			mm	450		
ROH	450			mm	450		
BL	4560	4100	3730	mm	4130	3720	3380
CYL w.r.t. COG (W)	-230	0	190	mm	-210	0	170
Tipping weight for full stroke of 46°				Tipping weight for full stroke of 52°			
Tipping weight	7	8	9	ton	7	9	10
Tipping weight for second last stage, up to 35°				Tipping weight for 2nd last stage, up to 39°			
Tipping weight	9	11	12	ton	10	11	12

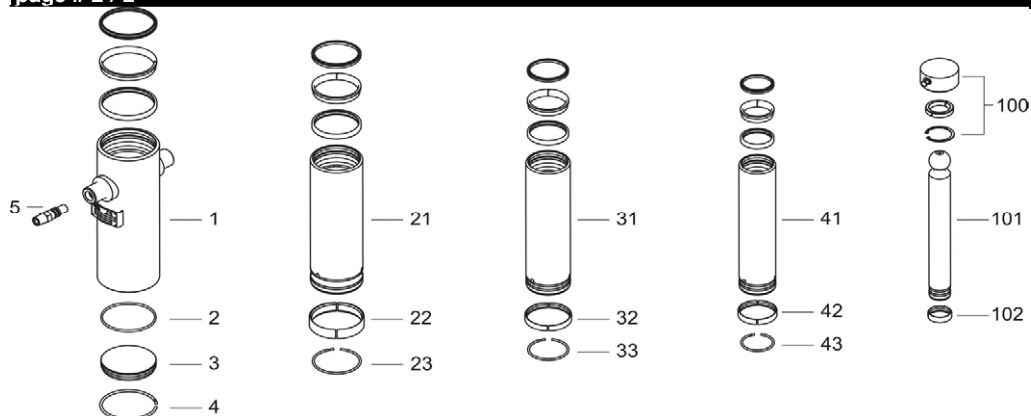
HYVA CYLINDER

714 18 351



type **ULB 110-4-1225-K177-40-1/2"-HC**

page # 2 / 2



Spare part list

Pos	Part no.	Description	Qty.
1	73518500	BASE 129-0426-N0090	1
2	01226674	O-RING 107 X 4 70 SHORE	1
3	73101280	BOTTOM PLATE UL 129	1
4	73110129	SNAPRING BASE UL 129	1
5	73103000	OIL INLET ADAPTOR UM 1/2"OT+O-RING	1
21	73618501	STAGE 110-0398-HC	1
22	71807110 K	SLIDER FL 110/GF 110 (2 X 1/2)	1
23	73110110 K	INNER STOPRING/LIFTRING UL 110	1
31	73617501	STAGE 093-0398-HC	1
32	73111093 K	SLIDER UL 093 (2x1/2)	1
33	73110093 K	INNER STOPRING/LIFTRING UL 093	1
41	73616501	STAGE 077-0398-HC	1
42	73111077 K	SLIDER UL 077 (2x1/2)	1
43	73110077 K	INNER STOPRING/LIFTRING UL 077	1

Spare part list

Pos	Part no.	Description	Qty.
100	01745101	RETAINER KIT ULB D.53	1
101	73400801	PISTON B 061-0435-HC	1
102	73111061 K	SLIDER UL 061 (2x1/2)	1

Seal kit complete

Part no.	Description
719 06 840K	Complete packset: Consists of all packsets with packset grease and o-ring.