

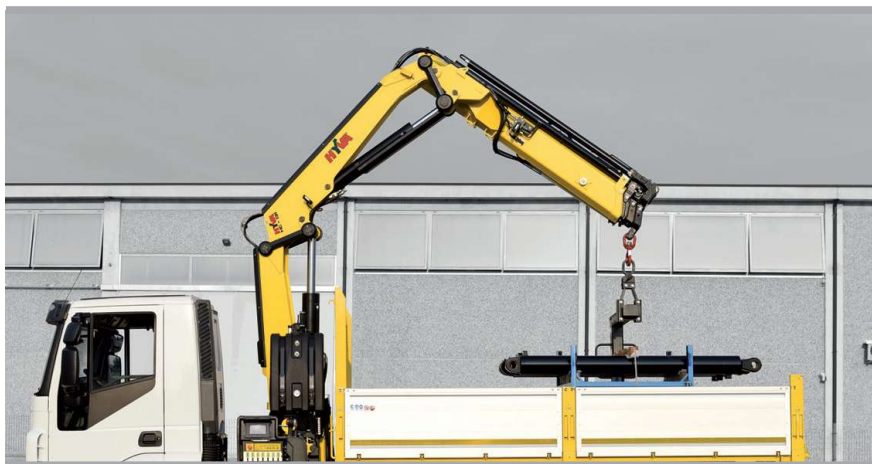
# HC 131



<b>HC131 E2</b>													
kg	12010*	2595	1770	1345	975	720	525						
m	1,00	4,63	6,58	8,53	10,91	12,96	15,11						
<b>HC131 E3</b>													
kg	11610*	2465	1650	1230	975	720	525	375					
m	1,00	4,71	6,66	8,61	10,66	12,96	15,11	17,26					
<b>HC131 E4</b>													
kg	11230*	2340	1540	1125	870	720	525	375	280				
m	1,00	4,80	6,75	8,70	10,75	12,80	15,11	17,26	19,36				
<b>HC131 E5</b>													
kg	10860*	2225	1435	1025	775	625	525	375	280				
m	1,00	4,88	6,83	8,78	10,83	12,88	15,03	17,26	19,36				
<b>HC131 E6</b>													
kg	10520*	2120	1345	935	690	535	435	375	280				
m	1,00	4,96	6,91	8,86	10,91	12,96	15,11	17,26	19,36				
<b>HC131 E3J2</b>													
kg									430	380	340	260	
m									13,35	14,75	16,22	17,80	
<b>HC131 E4J2</b>													
kg										250	220	200	130
m										15,50	16,85	18,35	19,89

\*) Theoretical lifting capacity

# HC 131



- EES** Extra Extension Speed
- SDS** Smooth Descent System
- LAS** Liftrod Articulating System

MODELS	LIFTING MOMENT	MAX VERTICAL REACH (HYDR)	SLEWING ANGLE	SLEWING TIME	MAX WORKING HEEL	WORKING PRESSURE	CRANE WEIGHT WITHOUT STABILIZERS	OIL TANK CAPACITY	OIL FLOW	DIMENSIONS
	tm	m	°	s/180°	°	bar	kg	l	l/min	mm B x h x S
HC131 E2	12,0	12,2	425	20	4	290	1610	130	60	2450x2330x825
HC131 E3	-	14,4	425	20	4	290	1725	130	60	2450x2330x825
HC131 E4	-	16,5	425	20	4	290	1830	130	60	2450x2330x825
HC131 E5	-	18,8	425	20	4	290	1930	130	60	2450x2330x895
HC131 E6	-	21,0	425	20	4	290	2020	130	60	2450x2330x895
HC131 E3J2	-	19,8	425	20	3	290	2125	130	60	2450x2450x940
HC131 E4J2	-	22,0	425	20	3	290	2230	130	60	2475x2497x940