

EDGE LINE

HC 183



HC183X E2

kg	17290*	3735	2560	1955	1455	1105	845
m	1,00	4,63	6,58	8,53	10,91	12,96	15,11

HC183X E3

kg	16810*	3570	2420	1820	1455	1105	845	645
m	1,00	4,71	6,66	8,61	10,66	12,96	15,11	17,26

HC183X E4

kg	16390*	3415	2290	1700	1335	1105	845	645	510
m	1,00	4,80	6,75	8,70	10,75	12,80	15,11	17,26	19,36

HC183X E5

kg	15980*	3275	2170	1585	1225	995	845	645	510
m	1,00	4,88	6,83	8,78	10,83	12,88	15,03	17,26	19,36

HC183X E6

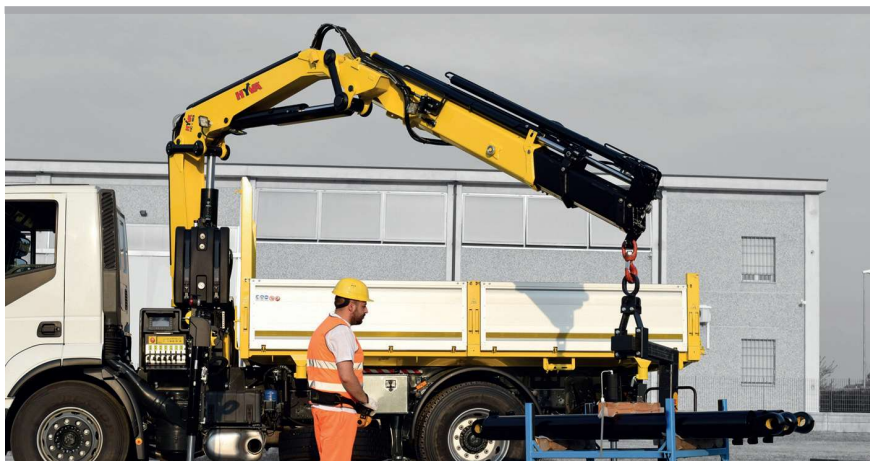
kg	15600*	3145	2065	1485	1125	900	745	645	510
m	1,00	4,96	6,91	8,86	10,91	12,96	15,11	17,26	19,36

HC183X E3J3

kg					730	645	575	505	400	340
m					13,60	15,20	16,70	18,30	19,90	21,70

*) Theoretical lifting capacity

HC 183 X



- EES** Extra Extension Speed
- SDS** Smooth Descent System
- P-LCS** Proportional Lift Control System
- LAS** Liftrod Articulating System

MODELS	LIFTING MOMENT	MAX VERTICAL REACH (HYDR)	SLEWING ANGLE	SLEWING TIME	MAX WORKING HEEL	WORKING PRESSURE	CRANE WEIGHT WITHOUT STABILIZERS	OIL TANK CAPACITY	OIL FLOW	DIMENSIONS
	tm	m	°	s/180°	°	bar	kg	l	l/min	mm B x h x S
HC183X E2	17,3	12,2	425	20	4	330	1745	130	60	2475x2330x825
HC183X E3	-	14,4	425	20	4	330	1875	130	60	2475x2330x825
HC183X E4	-	16,5	425	20	4	330	1995	130	60	2475x2330x825
HC183X E5	-	18,7	425	20	4	330	2105	130	60	2475x2330x905
HC183X E6	-	21,0	425	20	4	330	2200	130	60	2475x2330x905
HC183X E3J3	-	21,9	425	20	3	340	2365	130	60	2475x2615x957