

HYVA CYLINDER



FSH37557K

Front end cylinder with eye

type

FES 169-5-05630-002B-K1459

tipping weight

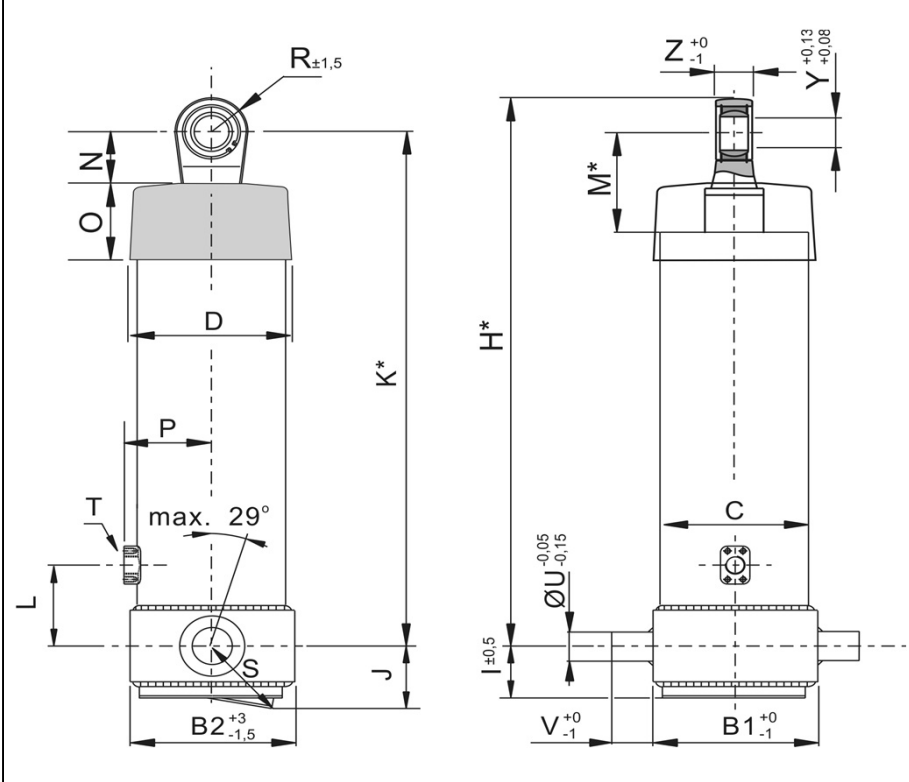
31-56 ton

page # 1 / 2

closed length (K)

1454-1489 mm

front & side view cylinder



	1	2	
A			mm
B	245	224	mm
C	191		mm
D	216		mm
E			mm
F			mm
G*			mm
H*	1512		mm
I	65		mm
J	106		mm
K*	1459		mm
L	190		mm
M*	115		mm
N	65		mm
O	100		mm
P	123		mm
Q			mm
R	53		mm
S	127		mm
T	1" SAE		
U	60		mm
V	65		mm
W			mm
X			mm
Y	50		mm
Z	70		mm

*incl.20 [-5;+30] mm pull out on piston

specifications

weight cylinder only	226 kg
total volume	86 L
working volume	79 L
maximum pressure	170 bar
maximum pump flow	137 L/min
maximum cylinder angle to front	30 °
maximum thrust first stage**	35 ton

**when cyl. mounted at a large angle, thrust first stage may become too high: see Hyva Tipper Program

technical notes

This cylinder is a lifting device only and may not be used as structural member or be subject to side load. Working pressure depends on application; never exceed maximum pressure. Cylinder painted Grey (colour DB7350). Max duration of extension 0.5 hours (excluded HC). See specification sheet CYL-0019 for mounting instructions, OIL-0011 for oil specifications and 015BRA01 for bracket specifications.

extension	1	2	3	4	5	6	7	8	9	
effective diameter [mm]	169	149	129	110	91					total
stroke [mm]	1140	1160	1160	1160	1010					5630

tipping weight

tipping weight at maximum pressure of 170 bar and C is 158 mm

BL (body length); OH (rear overhang); X=Ycog (vert. pos. centre of gravity); Qo (pivot length); C (bracket length); At = stroke x 60 / Qo	BL	7500			7200			6900		
	OH	200	500	800	200	500	800	200	500	800
At	45	47	49	47	49	52	49	52	55	
Ycog										
600	31	33	37	32	35	39	33	36	41	
900	33	36	41	34	38	44	36	41	48	
1200	36	40	46	37	43	50	40	46	56	

Schmitz Id-Nr:

1071222

HYVA CYLINDER



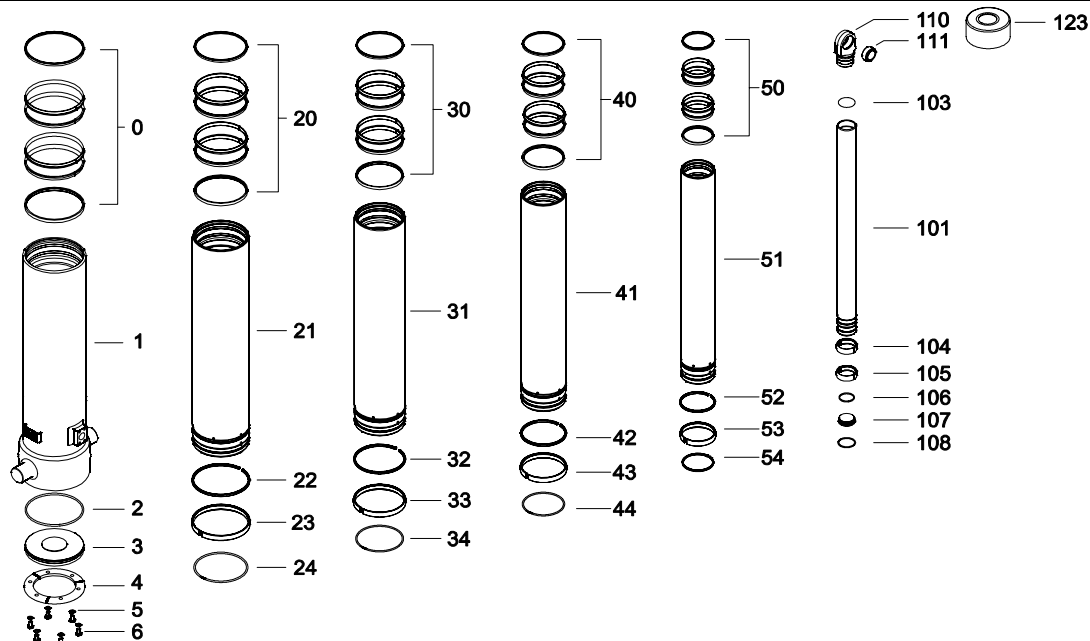
FSH37557K

Front end cylinder with eye

type

FES 169-5-05630-002B-K1459

page # 2 / 2



Spare part list

Pos	Part no.	Description	Qty.
0	71802191 K	PACKSET FL 191	01
1	72507370	BASE 191-1399-4/4SAE-190	01
2	71870040 K	SEAL BOTTOM PLATE 191	01
3	71821191	BOTTOM PLATE 191	01
4	71820191	LOCKING PLATE 191	03
5	01732559 K	SPRING WASHER M8 SET	01
6	01732055 K	BOLT M8 X 1.25 X 20 SET	01
20	71808169 K	PACKSET FL 169 TANDEM SEAL	01
21	72626371	STAGE 169-1360-TS-HC	01
22	71811169 K	OUTER STOPRING FL 169	01
23	71807169 K	SLIDER FL 169	01
24	71813169 K	LIFTRING FL 169x5	01
30	71808149 K	PACKSET FL 149/HP 150 TANDEM SEAL	01
31	72625371	STAGE 149-1360-TS-HC	01
32	71811149 K	OUTER STOPRING FL 149	01
33	71807149 K	SLIDER FL 149	01
34	71812149 K	LIFTRING FL 149/HP 150	01
40	71808129 K	PACKSET FL 129/HP 129 TANDEM SEAL	01
41	72624371	STAGE 129-1360-TS-HC	01
42	71811129 K	OUTER STOPRING FL 129/HP 129 HD	01
43	71807129 K	SLIDER FL 129/GF 129 (2 X 1/2)	01
44	71812129 K	LIFTRING FL 129/HP 129	01

Seal kit complete:

Part no.	Description
71908651 K	Seal kit complete: consists of all packsets with packset grease and O-rings

Spare part list

Pos	Part no.	Description	Qty.
50	71808110 K	PACKSET FL 110/HP 110 TANDEM SEAL	01
51	72623371	STAGE 110-1360-TS-HC	01
52	71811110 K	OUTER STOPRING FL 110/HP 110 HD	01
53	71807110 K	SLIDER FL 110/GF 110 (2 X 1/2)	01
54	71812110 K	LIFTRING FL 110	01
101	72402391	PISTON S 091-1380-HC (SR=150)	01
103	71870115 K	O-RING PISTON TOP 091	01
104	71811091 K	OUTER STOPRING FL 091/HP 091 HD	01
105	71807091 K	SLIDER FL 091 (2 X 1/2)	01
106	71870215	O-RING PISTON BOTTOM 091	01
107	71822091	BOTTOM PLATE PISTON FL 091	01
108	01745012	CIRCLIP 82 DIN 472 (87.5x2.5)	01
110	71837010	PISTON EYE 091 L=075 H=50 WD=70	01
111	01770226	BEARING BUSH EYE RG27G 5065-70	01
123	71838901	DUST COVER FES 169-5	01

Notes:

The inner and outer stoprings are pre-mounted in the grooves on spare stages and pistons. Therefore, when ordering new tubes, it is not required to order stopring separately.