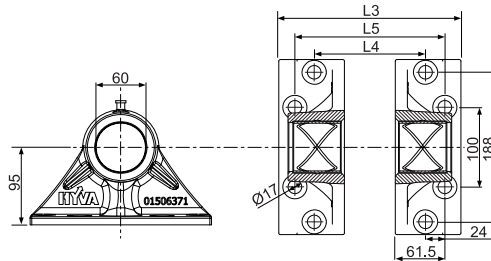
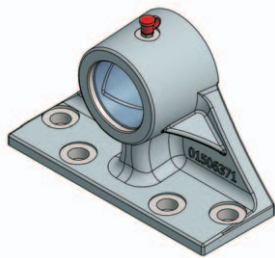


Chassis Brackets

Front end cylinder chassis brackets

Note : Please verify quoted dimensions with your local Hyva subsidiary or agent prior to use

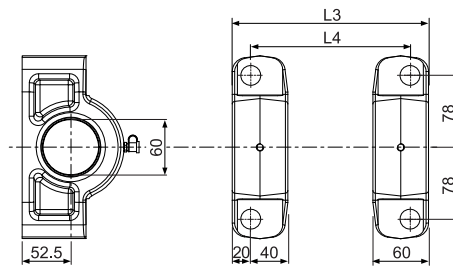
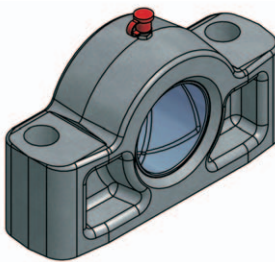
Chassis bracket for cylinder type FC/FE 110 - 191



Cylinder Type	L3 (mm)	L4 (mm)	L5 (mm)
110	328	240	288
118	345	257	305
129	366	278	326
137	366	278	326
149	366	278	326
157	410	322	370
169	410	322	370
179	410	322	370
191	410	322	370

Bracket Type	Part no. Bracket	Mass (Kg)	Part no. Replacement bush
Greased version	015 06 371	4.4	017 94 020

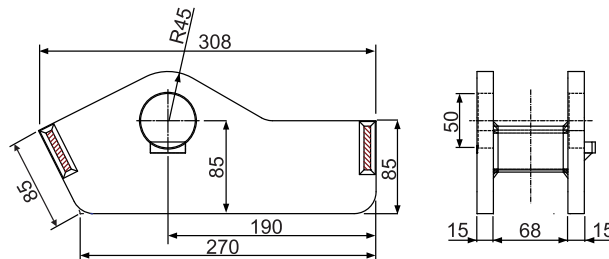
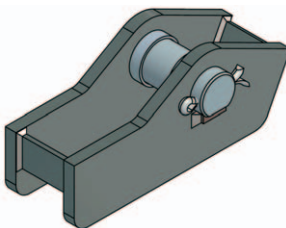
Chassis bracket for cylinder type FC/FE 110 - 191



Cylinder Type	L3 (mm)	L4 (mm)
110	284	244
118	301	261
129	322	282
137	322	282
149	322	282
157	366	326
169	366	326
179	366	326
191	366	326

Bracket Type	Part no. Bracket	Mass (Kg)	Part no. Replacement bush
Greased version	015 06 166	4.6	017 94 020

Chassis bracket for cylinder type FSE 110 - 191



Bracket Type	Part no. Bracket	Mass (Kg)	Part no. Replacement axle kit
Welded chassis bracket	015 06 206	8.9	015 06 776

General information

For all chassis brackets use:

- Bolts M16x1.5 Property Class 8.8 or higher.
- Self-locking nuts M16 Property Class 8 or higher.

Note:

- Brackets are painted black (RAL 9005 / gloss 25%).
- Weight can vary as per casting process.
- Greased versions includes M8x1 grease nipple.
- For mounting, see instructions CYL-0030, CYL-0031 or CYL-0033.
- For bush replacements, see instruction BRA-0002.